

Legend

- Proposed 30-inch Diameter Natural Gas Pipeline Alignment
- Approximate Mileposts
- Contractor Yard
- County Boundary
- USGS Quad Boundary
- Town Boundary
- Facility
- Permanent Access Road (PAR)
- Temporary Access Road (TAR)

NYSDEC Stream Water Quality Classifications

- A
- AA
- B
- C
- D
- (T) - Trout
- (TS) - Trout Spawning

Source: New York State Department of Environmental Conservation

Constitution Pipeline

NYSDEC Stream Water Quality Classifications and Standards

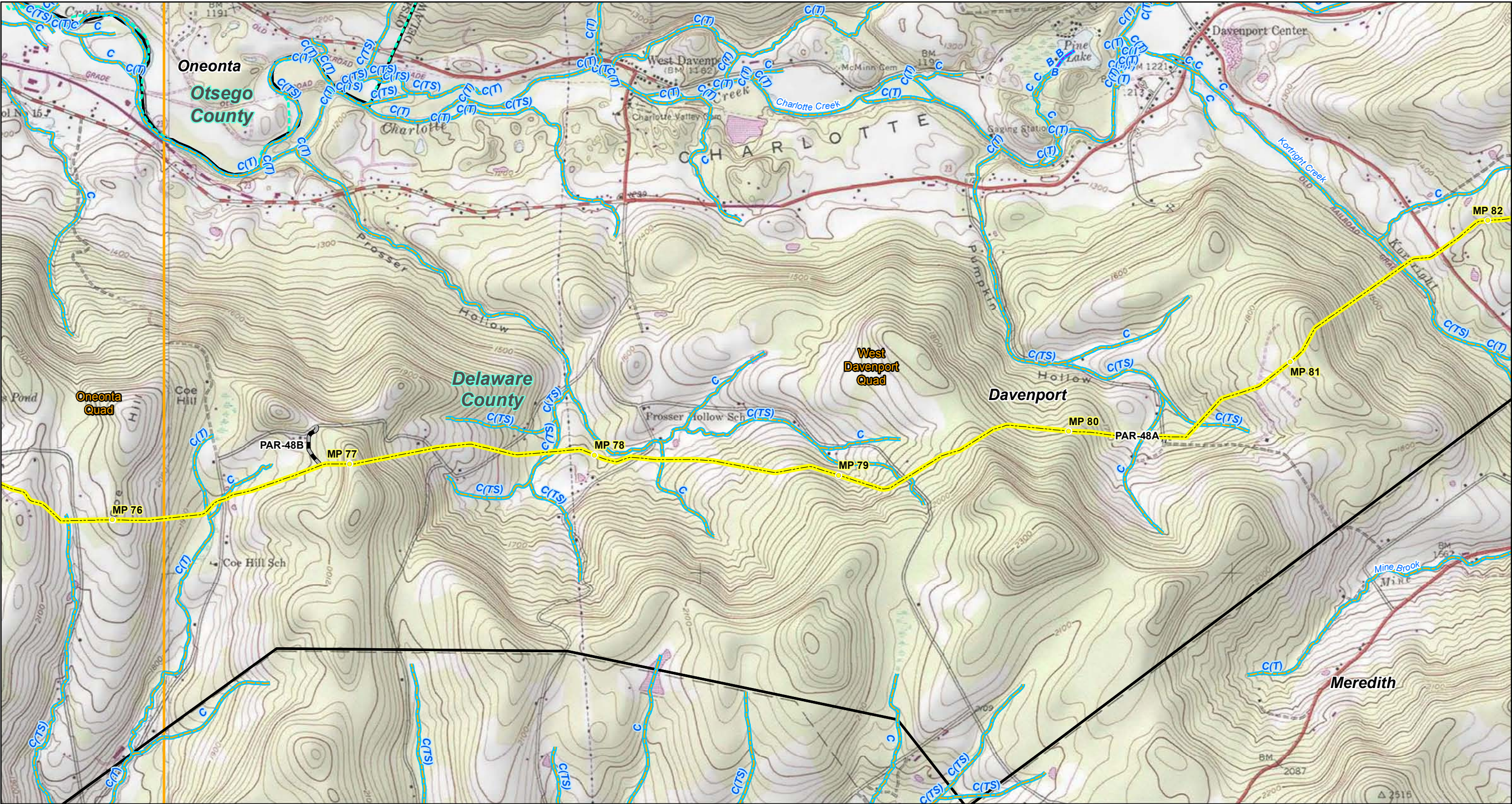
0 1,000 2,000 4,000 Feet

1:24,000 1 inch = 2,000 feet

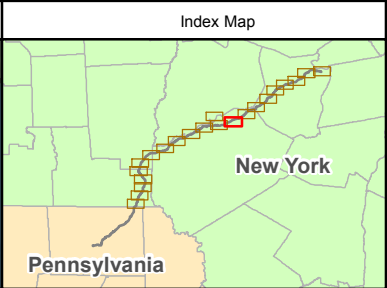
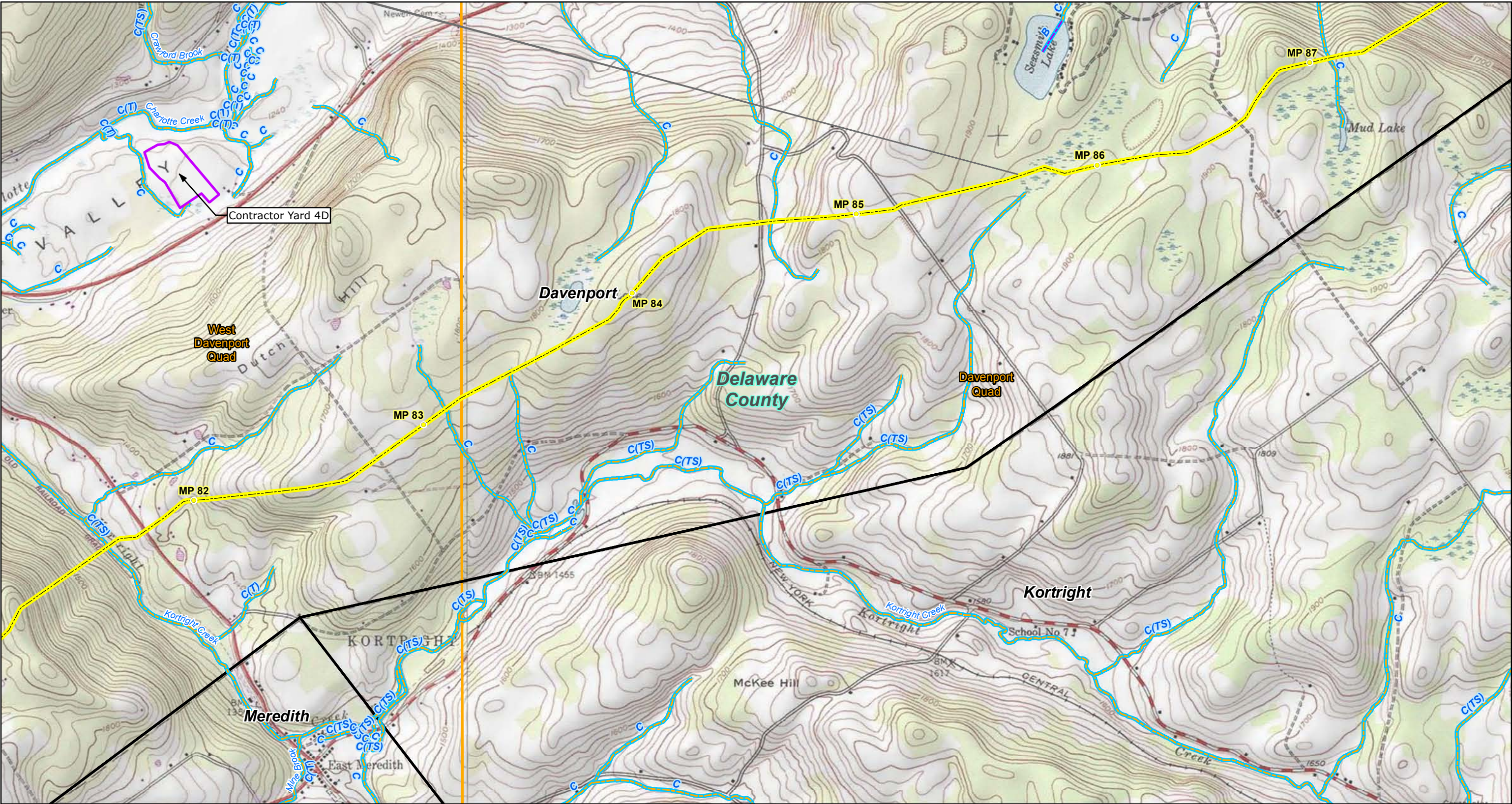
Figure 4

July 2014

Sheet 11 of 22



<p>Site Location</p>	<p>Index Map</p>	<p>Legend</p> <ul style="list-style-type: none">Proposed 30-inch Diameter Natural Gas Pipeline AlignmentApproximate MilepostsContractor YardCounty BoundaryUSGS Quad BoundaryTown BoundaryFacilityPermanent Access Road (PAR)Temporary Access Road (TAR) <p>NYSDEC Stream Water Quality Classifications</p> <ul style="list-style-type: none">AAABCD(T) - Trout(TS) - Trout Spawning <p>Source: New York State Department of Environmental Conservation</p>	<p>Constitution Pipeline</p> <p>NYSDEC Stream Water Quality Classifications and Standards</p> <p>0 1,000 2,000 4,000 Feet</p> <p>1:24,000 1 inch = 2,000 feet</p>	<p>Figure 4</p> <p>July 2014</p> <p>Sheet 12 of 22</p>
----------------------	------------------	---	---	--



Legend

- Proposed 30-inch Diameter Natural Gas Pipeline Alignment
- Approximate Mileposts
- Contractor Yard
- County Boundary
- USGS Quad Boundary
- Town Boundary
- Facility
- Permanent Access Road (PAR)
- Temporary Access Road (TAR)

NYSDEC Stream Water Quality Classifications

- A
- AA
- B
- C
- D
- (T) - Trout
- (TS) - Trout Spawning

Source: New York State Department of Environmental Conservation

Constitution Pipeline

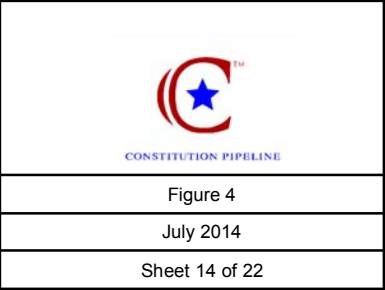
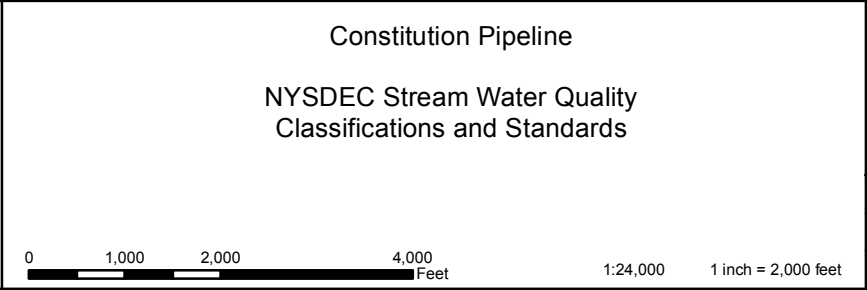
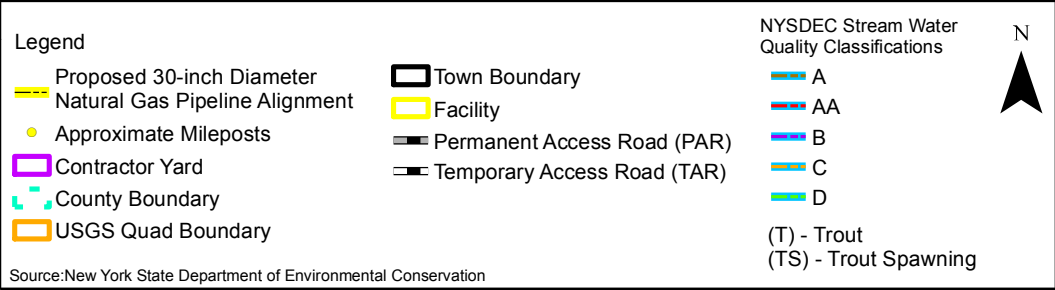
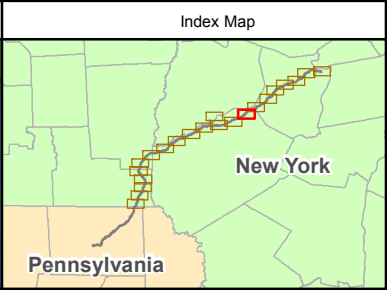
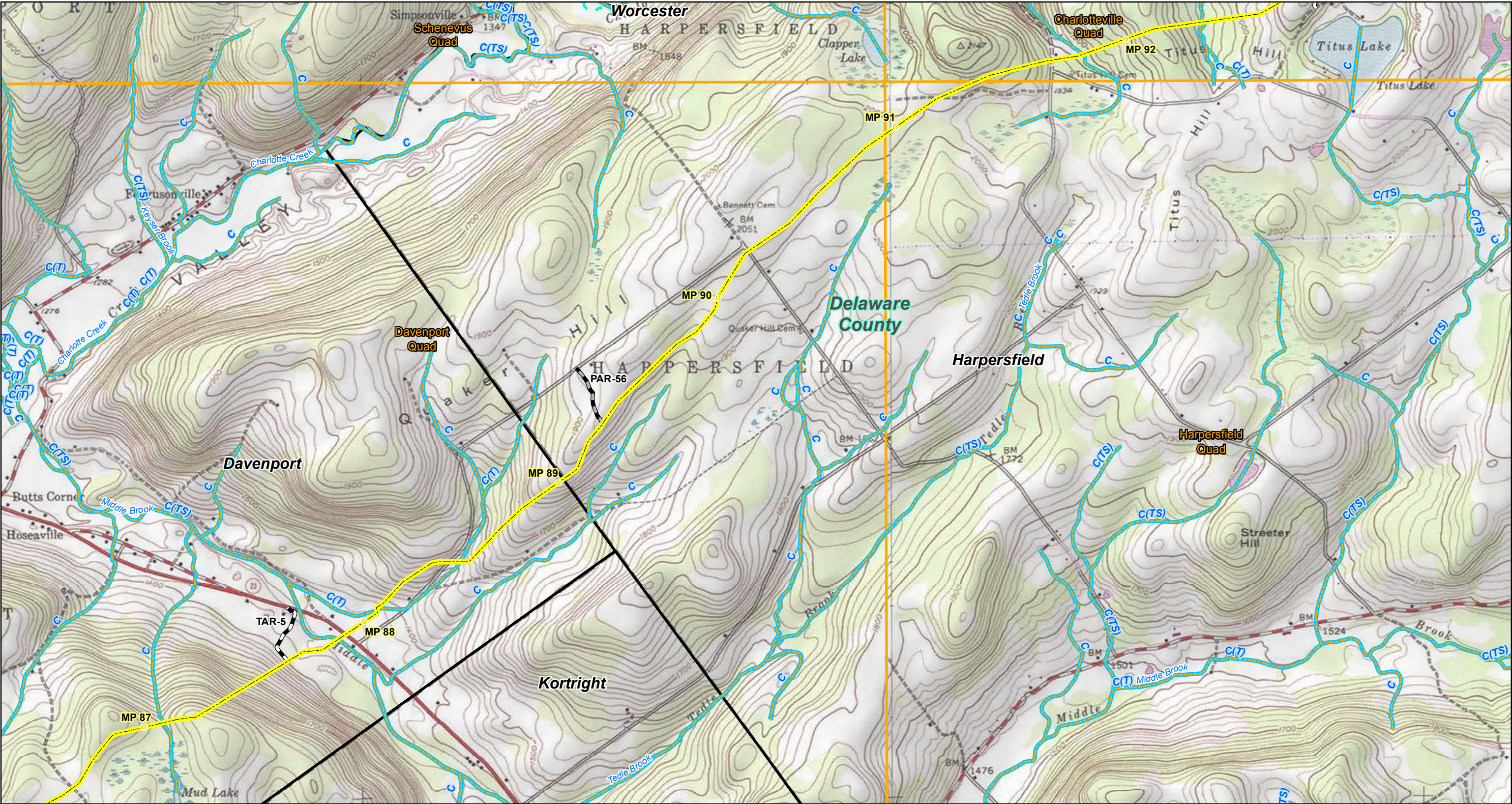
NYSDEC Stream Water Quality Classifications and Standards

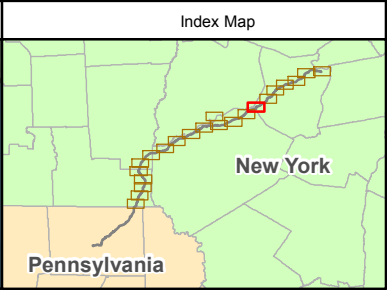
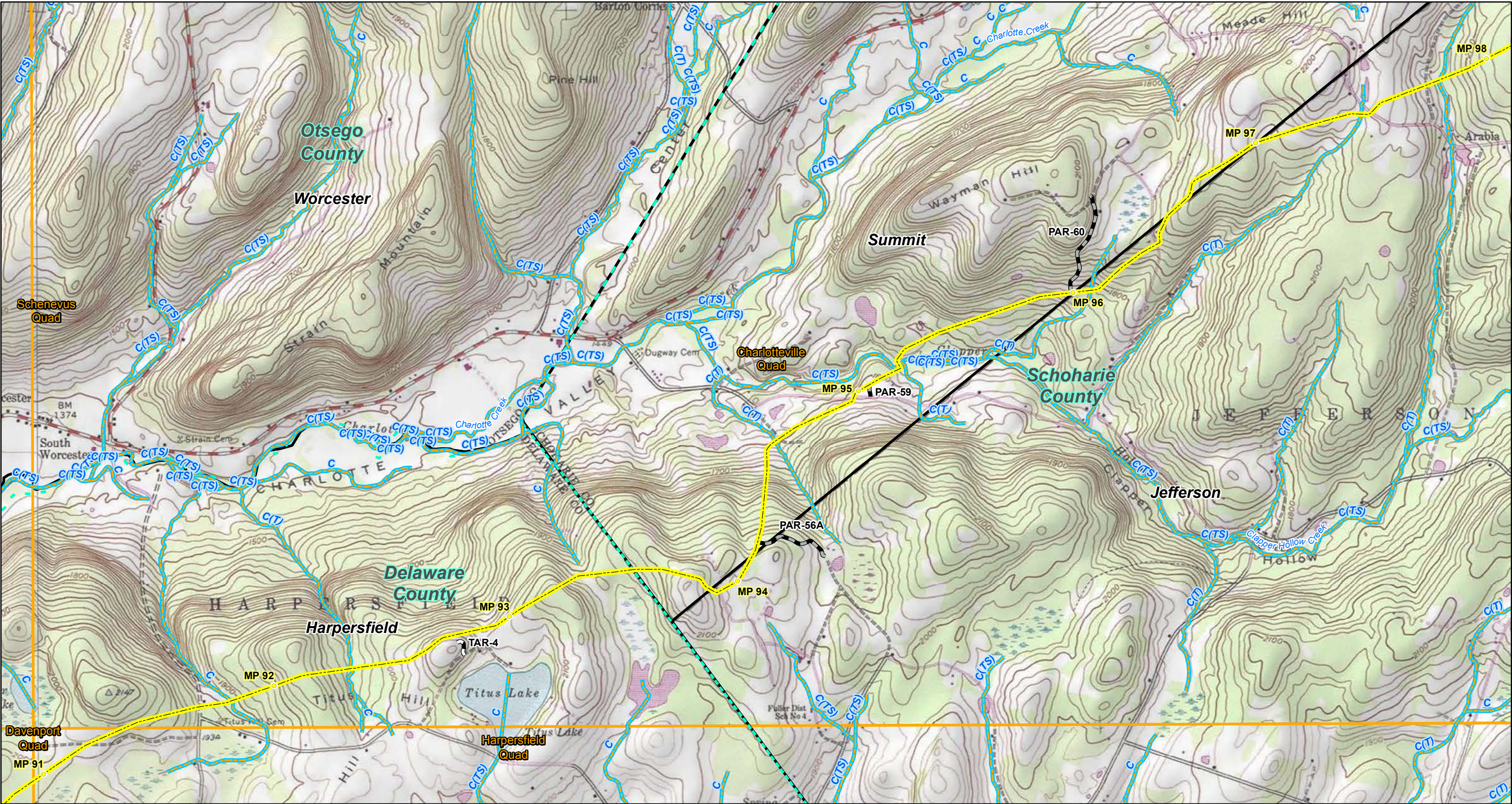
1:24,000 1 inch = 2,000 feet

Figure 4

July 2014

Sheet 13 of 22





Legend

- Proposed 30-inch Diameter Natural Gas Pipeline Alignment
- Approximate Mileposts
- Contractor Yard
- County Boundary
- USGS Quad Boundary
- Town Boundary
- Facility
- Permanent Access Road (PAR)
- Temporary Access Road (TAR)

Source: New York State Department of Environmental Conservation

NYSDEC Stream Water Quality Classifications

- A
- AA
- B
- C
- D

(T) - Trout
(TS) - Trout Spawning

N

Constitution Pipeline

NYSDEC Stream Water Quality Classifications and Standards

0 1,000 2,000 4,000 Feet

1:24,000 1 inch = 2,000 feet

Figure 4

July 2014

Sheet 15 of 22